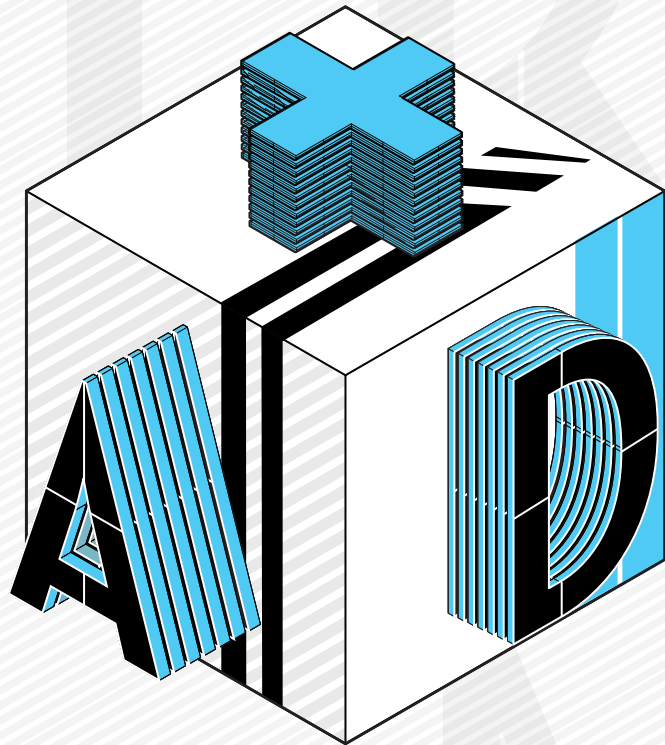




SPONSORSHIP  
BOOKLET

a+d  
museum



# WHO WE ARE

A+D Museum is an all-inclusive information and education center for design, including architecture, interior, landscape, fashion, product, graphic, and film/theater design. It is the only museum in Los Angeles where continuous exhibits of architecture and design are on view.

Through exhibits, symposia, multi-disciplinary projects, educational and community programming, A+D serves as a showcase for the work of important regional, national and international designers, providing a forum for contemporary issues in architecture, urbanism, and design that are helping to shape the city.

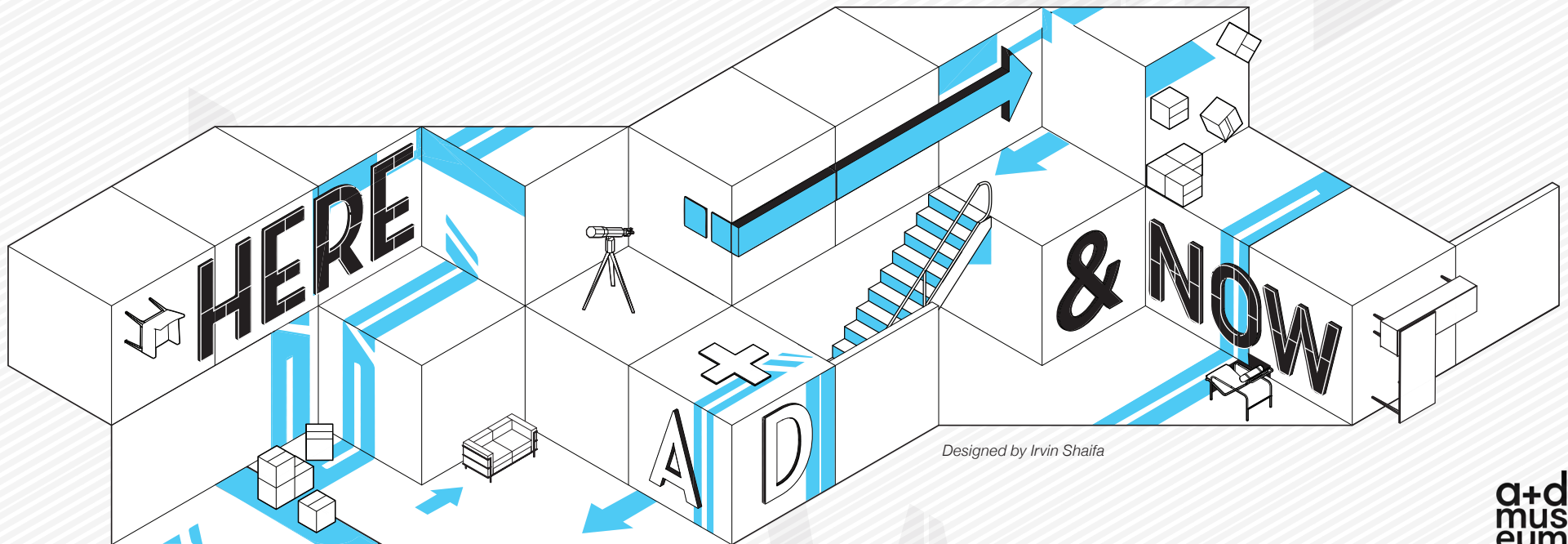
A+D Museum was founded by Stephen Kanner Bernard Zimmerman and Joe Addo in January 2001 and first opened our doors in the Bradbury Building in Downtown LA. We have had a few homes around Los Angeles, getting to know the diverse communities found both on the East and West sides of the city. In 2015 we found a home that speaks to the experimental nature of our programming in Downtown LA's Arts District.

# CELEBRATE GALA 2022

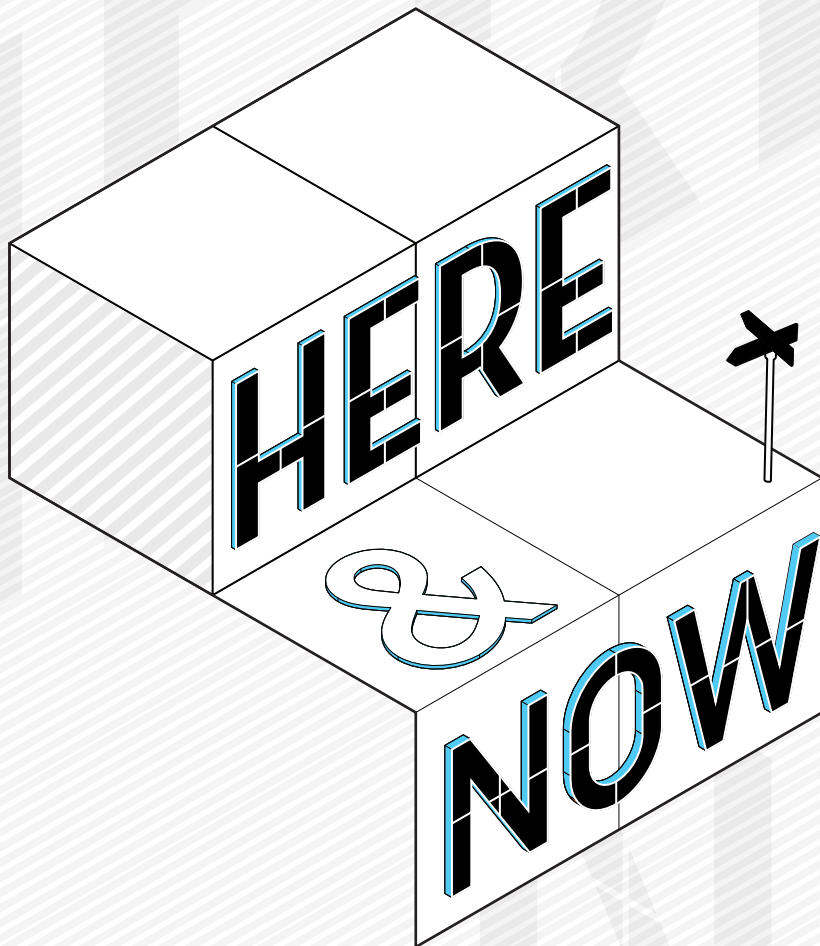
**Celebrate is A+D Museum's annual Gala Fundraiser, and this year's theme of the Here & Now is a joyful celebration of being in the room, together, all at once.**

2022 is a moment and time more fluid than at any other point in history. We are post-pandemic but pre-future, we are together, but not quite, and we live and work in more spatial realms, whether real, virtual, mixed, 2d or 3d than seems possible. We are forging new frontiers in the metaverse, while our streaming services tell us we're on a single strand of a multiverse. We are everywhere but here, everywhen but now.

Here & Now celebrates our time, our place, our creative energy, our work, our play and our togetherness in the present. It celebrates the robust design community that has the great fortune of calling Los Angeles home. Here & Now also celebrates our mission to re-establish the A+D Museum as a physical space, our own here again. We look forward to welcoming you, our A+D community, to an evening of uplifting shared experience - and a spectacular party!



*Designed by Irvin Shaifa*



# THE EVENT

## Who

100's of design practitioners and aficionados

## What

Annual A+D Museum Fundraiser Gala  
and Silent Auction

## When

Wednesday, November 30, 2022, 7:00pm

## Where

ROW DTLA

## Why

To Celebrate the nation's only institution solely  
dedicated to progressive architecture and design.

Celebrate 2022 Sponsors will also receive an  
exclusive invitation to a VIP Event coinciding with  
the re-opening of the museum, our own here and  
now in January 2023!

# VIP OPENING

## Who

Our Celebrate sponsors and partners

## What

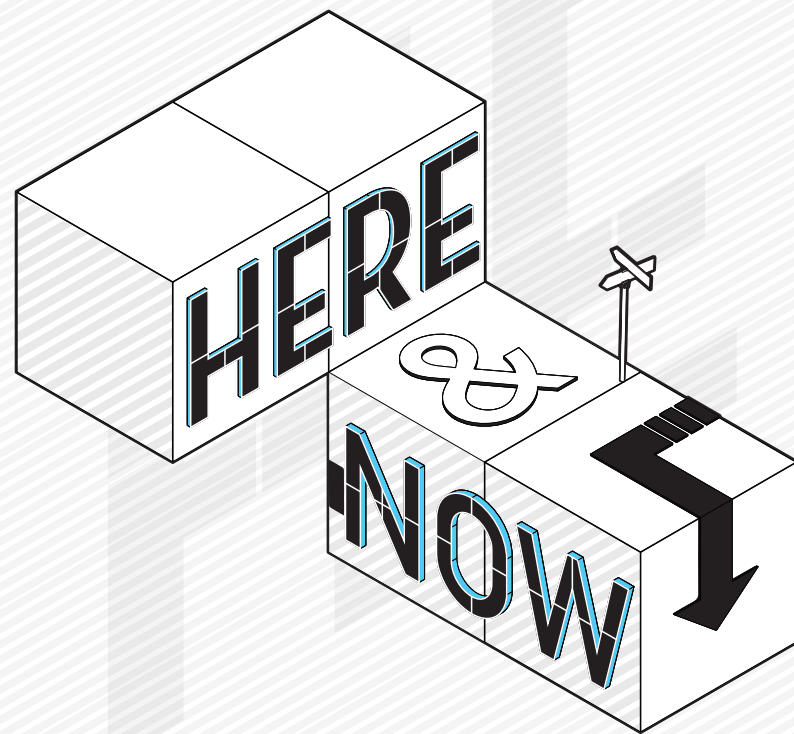
A special VIP event celebrating the physical re-opening of the Museum

## When

TBD January 2023

## Why

To Celebrate the A+D Museum's launch of our new home, our own here & now, and to celebrate the wonderful community of creatives that the museum has the great fortune to call our supporters! We can't wait to welcome you.





# PAST & PRESENT SUPPORTERS

## Founder Circle

All Coast Construction  
Gensler  
MATT Construction  
VS America

## Patron Circle

Architect's Newspaper  
Crisp Imaging  
Graye  
Harley Ellis Devereaux  
KAA Design  
KGM Lighting  
Olson Visual  
Selbert Perkins Design  
Snyder Diamond  
Swinerton Builders

## Director Circle

Angeleno Magazine  
Big Ass Fans  
GAFCON  
HBO  
Herman Miller  
LAA Commission  
Louis Poulsen  
Pacific Alarm  
Perkins + Will  
Room & Board  
Visible Graphics  
Zumtobel

## Curator Circle

Acrylite  
AECOM

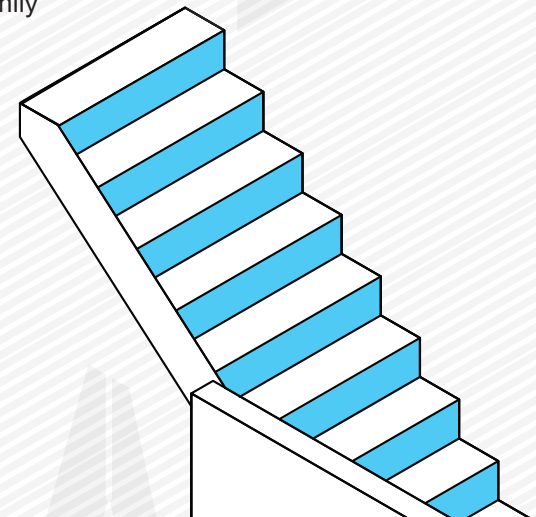
Bapko Metal Inc.  
Bang & Olufsen Pasadena  
Brian and Patti Stewart  
Bulthaup  
Jones Lang La Salle Americas  
California Resources Corporation  
Clark Construction  
Collins Collins Muir+Stewart, LLP  
CSI Electric  
Daltille  
Gensler  
GES Sheet Metal  
J. Fox Lighting  
Light Build Design  
Linear City Development  
Los Angeles Art Collective  
MGAC  
Modulyss  
Pivot Interiors  
Richard Frinier Design Studio  
RJ Performance  
Saiful Bouquet  
Standard Architecture  
SCI-Arc  
Tangram  
Veneklasen Associates  
Westco

## LA Fellow Circle

Abramson Teiger Architects  
The Agency  
AC Martin  
A & H Communications  
AMPCO Contracting Inc.  
ARC (Architectural Resources Group)

Axis Fire Protection  
Bedrock Company  
Bergelectric Corporation  
Bonas Company  
Buro Happold  
BuzziSpace USA  
Calex Engineering Co.  
Cleveland Marble  
CO Architects  
Corgan  
Dake Wilson Architects  
Designguide.com  
Desso Hospitality  
Duan & Valerie Tran  
Dwell on Design  
Englekirk Partners Consulting  
Environmental Construction Group  
Escalante Architects  
FOSCARINI  
Graphisoft  
HED  
Henderson Engineers  
House & Robertson Architects, Inc  
Interior Services  
JLL Team Hollywood  
Kilograph  
Land Mark Electric  
The Lehman-Goodyear Family  
Magni Kalman Design  
Marmol Radziner  
Martin Bros.  
Michele Gamble  
Mohawkw  
Montalba Architects  
Morley Builders

NBBJ  
Onmgivnig  
Pacific Steel Group  
Pacific Wall Systems, Inc.  
Patrick Tighe Architecture  
Paul Rogers Studio  
Prime Plumbing Solutions Inc.  
Rheinschmidt Marble & Tile  
Richard Holz Inc.  
RJC Builders  
Robert & Elizabeth Stellwagen  
Rodin Group Inc.  
Room & Board  
SASCO  
Shaw & Sons  
Shimahara Illustration  
SHoP Architects  
Steinberg Hart  
Studio Blitz  
TrueNorth Steel  
Webcor





# SINCE 2020

March 2020 launched an unprecedented and tumultuous time for arts institutions. While the pandemic forced us to close our Arts District building, the Museum continued to thrive with a slate of rich and inventive on-line exhibits and programs.

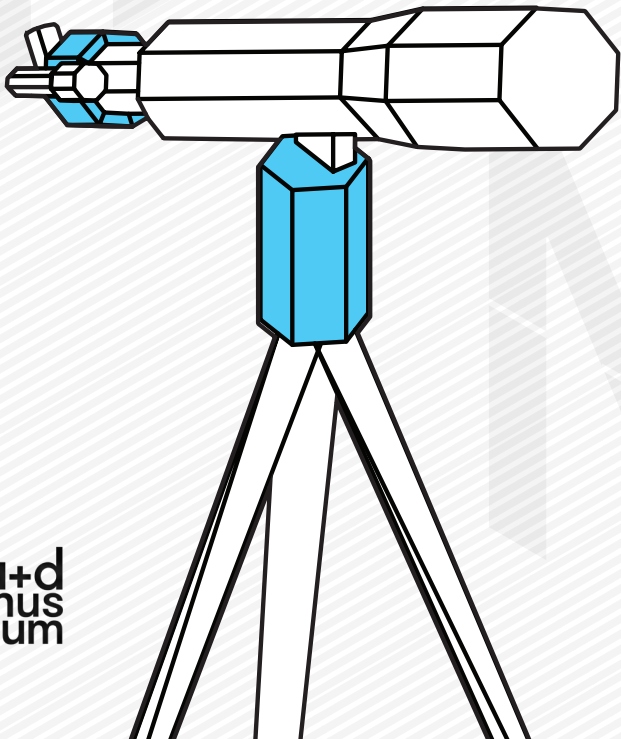
In 2022 the Museum will move full force into a hybrid institution, with both physical and digital programming. We are committed to reopening in a permanent space by 2023. Pop-up exhibits are planned around Los Angeles as well, further expanding our reach to underserved communities.

Partnerships with entities such as the Getty Research Institute, Inner-City Arts, JFK High School Architecture and Design Magnet School will continue as vital entryways for engagement and education. In the meantime, a refreshed on-line presence has launched at [aplusd.org](http://aplusd.org), pushing forward a digital archive of LA histories, exhibitions, and workshops serving as the Museum's collection.

**A+D's bold vision is to be a premier platform for exploration, and to play a critical role by inspiring meaningful dialogues, critical thinking and calls to action. This includes the following community building goals:**

## **THE YEAR AHEAD**

- Build awareness of architecture and design.
- Reach an ethnically, socio-economically, and geographically broad and diverse audience.
- Foster conversations about environmental equity and resiliency.
- Be a hub and resource for architecture and all areas of design.
- Educate – from elementary school students to life-long learners.
- Collaborate with architecture and design schools in Los Angeles and beyond.
- Contribute to the greater network of museums and galleries in the region, and internationally.
- Showcase student and emerging talent on an ongoing basis.
- Provide a forum for related panel discussions and conferences.







# SPONSOR LEVELS

There are many ways to get involved as a Celebrate Donor. Each level of contribution is greatly appreciated by the museum and the community we serve.

Sponsor Benefits are outlined in the following pages for your consideration. Those who are looking for a specific benefit are encouraged to meet with the Executive Director and a Board Member to discuss.

## **Founder Circle**

\$50,000+

## **Patron Circle**

\$20,000 - \$49,999

## **Director Circle**

\$15,000 - \$19,999

## **Docent Circle**

\$10,000 - \$14,999

## **Curator Circle**

\$5,000 - \$9,999

## **LA Fellow**

\$2,500 - \$4,999



# FOUNDER CIRCLE

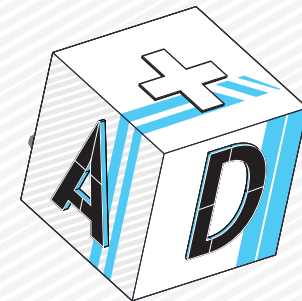
## \$50,000+

- + Name recognition as Founder Circle sponsor in all printed materials, A+D website and all promotional announcements
- + Recognition as Founder Circle sponsor on Celebrate Building Banner
- + Product display opportunity at Celebrate event and the VIP Reception
- + Prominent placement on the Cover of the Event Program as Founder Circle sponsor
- + Most prominent name/logo on Step-and-Repeat
- + Recognition on museum donor wall
- + Recognition with special notation on A+D website home page
- + Opportunity to distribute gifts to attendees
- + Opportunity to invite press to cover event with pre-approval of A+D
- + Free facility rental for 2 private events within the year. (Subject to museum calendar availability. Rentals, food and beverage costs apply.)
- + 10 tickets to VIP reception
- + 50 tickets to Celebrate event
- + Company-wide One-year memberships to A+D Museum (includes the following):
  - + Free Admission to A+D Museum special events and lectures
  - + Monthly A+D Member's updates
  - + Invitation to Member Only exhibition tours
  - + 10% discount at A+D Museum Shop impermanent collection

# PATRON CIRCLE

## \$20,000 - 49,999

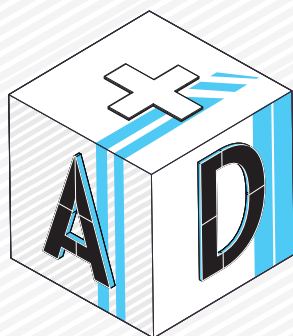
- + Name recognition as Patron Circle sponsor in all printed materials, A+D website and all promotional announcements
- + Product display opportunity at Celebrate event and the VIP Reception
- + Prominent placement on the Cover of the Event Program as Patron Circle sponsor
- + Name/logo on Step-and-Repeat
- + Recognition on museum donor wall
- + Recognition with special notation on A+D website home page
- + 50% discount on facility rental for private events for one year.(Subject to museum calendar availability. Rentals, food and beverage costs apply.)
- + 8 tickets to VIP reception
- + 20 tickets to Celebrate event
- + Company-wide One-year memberships to A+D Museum (includes the following):
  - + Free Admission to A+D Museum special events and lectures
  - + Monthly A+D Member's updates
  - + Invitation to Member Only exhibition tours
  - + 10% discount at A+D Museum Shop impermanent collection



# DIRECTOR CIRCLE

## \$15,000 - \$19,999

- + Name recognition as Director Circle sponsor in all printed materials, A+D website and all promotional announcements
- + Prominent placement in the Event Program as Director Circle sponsor
- + Recognition on museum donor wall
- + Recognition on A+D website home page
- + 35% discount on facility rental for private events for one year. (Subject to museum calendar availability. Rentals, food and beverage costs apply.)
- + 6 tickets to VIP reception
- + 15 tickets to Celebrate event
- + 25 One-year memberships to A+D Museum (includes the following):
  - + Free Admission to A+D Museum special events and lectures
  - + Monthly A+D Member's updates
  - + Invitation to Member Only exhibition tours
  - + 10% discount at A+D Museum Shop impermanent collection

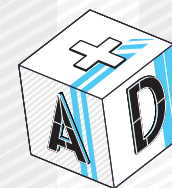




# DOCENT CIRCLE

## \$10,000 - \$14,999

- + Name listed as Docent Circle sponsor in all printed materials, A+D website and all promotional announcements
- + Logo placement in Event Program as Docent Circle sponsor
- + Recognition on museum donor wall
- + Recognition on A+D website
- + 30% discount on facility rental for private events for one year. (Subject to museum calendar availability. Rentals, food and beverage costs apply.)
- + 5 tickets to VIP reception
- + 10 tickets to Celebrate event
- + 20 One-year memberships to A+D Museum (includes the following):
  - + Free Admission to A+D Museum special events and lectures
  - + Monthly A+D Member's updates
  - + Invitation to Member Only exhibition tours
  - + 10% discount at A+D Museum Shop impermanent collection





# **CURATOR CIRCLE**

## **\$5,000 - \$9,999**

- + Name listed as Curator Circle sponsor in all printed materials, A+D website and all promotional announcements
- + Logo placement in Event Program as Curator Circle sponsor
- + Recognition on museum donor wall
- + Recognition on A+D website
- + 25% discount on facility rental for private events for one year. (Subject to museum calendar availability. Rentals, food and beverage costs apply.)
- + 4 tickets to VIP reception
- + 6 tickets to Celebrate event
- + 15 One-year memberships to A+D Museum (includes the following):
  - + Free Admission to A+D Museum special events and lectures
  - + Monthly A+D Member's updates
  - + Invitation to Member Only exhibition tours
  - + 10% discount at A+D Museum Shop impermanent collection

# LA FELLOW

## \$2,500 - \$4,999

- + Name listed as LA Fellow sponsor in all printed materials, A+D website and all promotional announcements
- + Small logo placement in Event Program as LA Fellow sponsor
- + Recognition on museum donor wall
- + Recognition on A+D website
- + 25% discount on facility rental for private events for one year.
- + (Subject to museum calendar availability. Rentals, food and beverage costs apply.)
- + 2 tickets to VIP reception
- + 4 tickets to Celebrate event
- + 5 One-year memberships to A+D Museum (includes the following):
  - + Free Admission to A+D Museum special events and lectures
  - + Monthly A+D Member's updates
  - + Invitation to Member Only exhibition tours
  - + 10% discount at A+D Museum Shop impermanent collection



# CONTRIBUTIONS MADE EASY

**Contact Email:**

camille@aplusd.org  
info@aplusd.org

**Mailing Address**

A+D Museum  
4411 Santa Monica Blvd  
Los Angeles, CA 90029

**Option 1**

Payable by Check to the A+D Museum

**Option 2**

[Payable by PayPal](#)

*\*A+D Museum is a 501(c) 3 non-profit organization.  
Donations are tax deductible as allowed by law.  
Tax ID 48-1269978*

**Sponsor Information**

Name of Company

---

Company Representative

---

Address

---

Phone

---

Email

---



# CONTACT



**Roger Fricke**  
**President**  
roger@aplusd.org

**Nancy Levens**  
**Chair**  
nancy@aplusd.org

**Natasha Sandmeier**  
**Executive Director**  
natasha@aplusd.org

**Camille Elston**  
**Managing Director**  
camille@aplusd.org